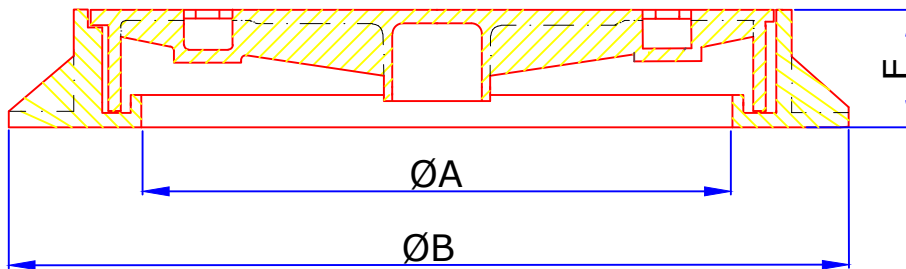


PLAN OF COVER & FRAME



SECTIONAL VIEW

CODE	CLEAR OPENING Ø A (MM)	OVER BASE ØB (MM)	FRAME HEIGHT E (MM)	LOADING kN	STANDARD
CI-18C	Ø600	Ø 800	100	125	EN 124-2015

DATE : 12-06-18	<u>DESCRIPTION :</u> 600 MM DIA CLEAR OPENING DUCTILE IRON LOADING CLASS B 125 CIRCULAR SINGLE SEAL COVER & FRAME	REV : 01
DRAWN BY : GK		SCALE : NTS
CHECKED BY: BK		ALL DIMENSIONS ARE
APP.BY: AB		IN MM